



# COMPANY PROFILE



23-2, Jalan Tasik Selatan 3,  
Bandar Tasik Selatan,  
57000 Kuala Lumpur.  
Malaysia.

**G&P M&E SDN BHD  
(938593A)**



# Company Background

G&P M&E Sdn Bhd is a mechanical and electrical specialist consulting firm of the G&P Professionals Group, which is a multi-disciplinary engineering consulting firm.

The Group offers a wide range of quality engineering consulting services, including:

- G&P Geotechnics
- G&P Structures
- G&P Infra
- G&P Maritime
- G&P Claims & Contract
- G&P Project Management
- G&P Water
- G&P R International (Cambodia)
- G&P Highways & Transportation
- G&P Dams Water Services
- G&P Professionals (Sarawak)
- NGI – G&P
- ZED – G&P
- G&P Water (Singapore)
- G&P Professionals (Sabah)
- G&P R&D
- G&P M&E
- G&P Special Structures

The Group was formed at the start of the 21st century and is currently one of the leading Engineering Consultancy Group practicing in Malaysia.

We are proud to provide high quality and optimised engineering solutions to address the increasing demands and diversity of the challenges facing current developments. Besides our pride in technically competent engineering services, we provide value-adding services in our endeavours to “delight our client” through our effort to providing innovative and optimally cost effective solutions,

Our Mechanical and Electrical engineering consultancy services primarily encompass planning, design and project implementation. These services provide major inland developmental aspects in residential, industrial and commercial, as well as infrastructure projects such as roads, highways, bridges, marine works, water supply, sewage systems, hydrology and drainage, solid waste disposal, power generation and telecommunication.

The firm, to its credit, is proud with its impressive track record of design, documentation and construction implementation of numerous major projects in Malaysia. We believe the underlying success of engineering and ever-evolving technology is the knowledge advancement.

# Company Background

G&P M&E Sdn Bhd was founded to provide value adding state-of-the-art integrated and coordinated mechanical, electrical, plumbing and fire protection consulting engineering and building commissioning services.



Our experienced staff examine alternative solutions and provide proven and responsive air conditioning and mechanical ventilation, electrical, plumbing and fire protection engineering design for state-of-the-art facilities. We are able to handle large scale and complex projects from inception to construction completion, in their entirety. As well as provide feasibility of alternative layouts and are a proactive participant in value engineering, early in a project.



G&P M&E has Green Building Index (GBI) certified facilitator on his staff and a proponent of Sustainable / Green Design Concepts. Many staff engineers are GBI or Green Mark certified Facilitators and as a firm we are involved in many projects that are pursuing GBI or Green Mark Certification.

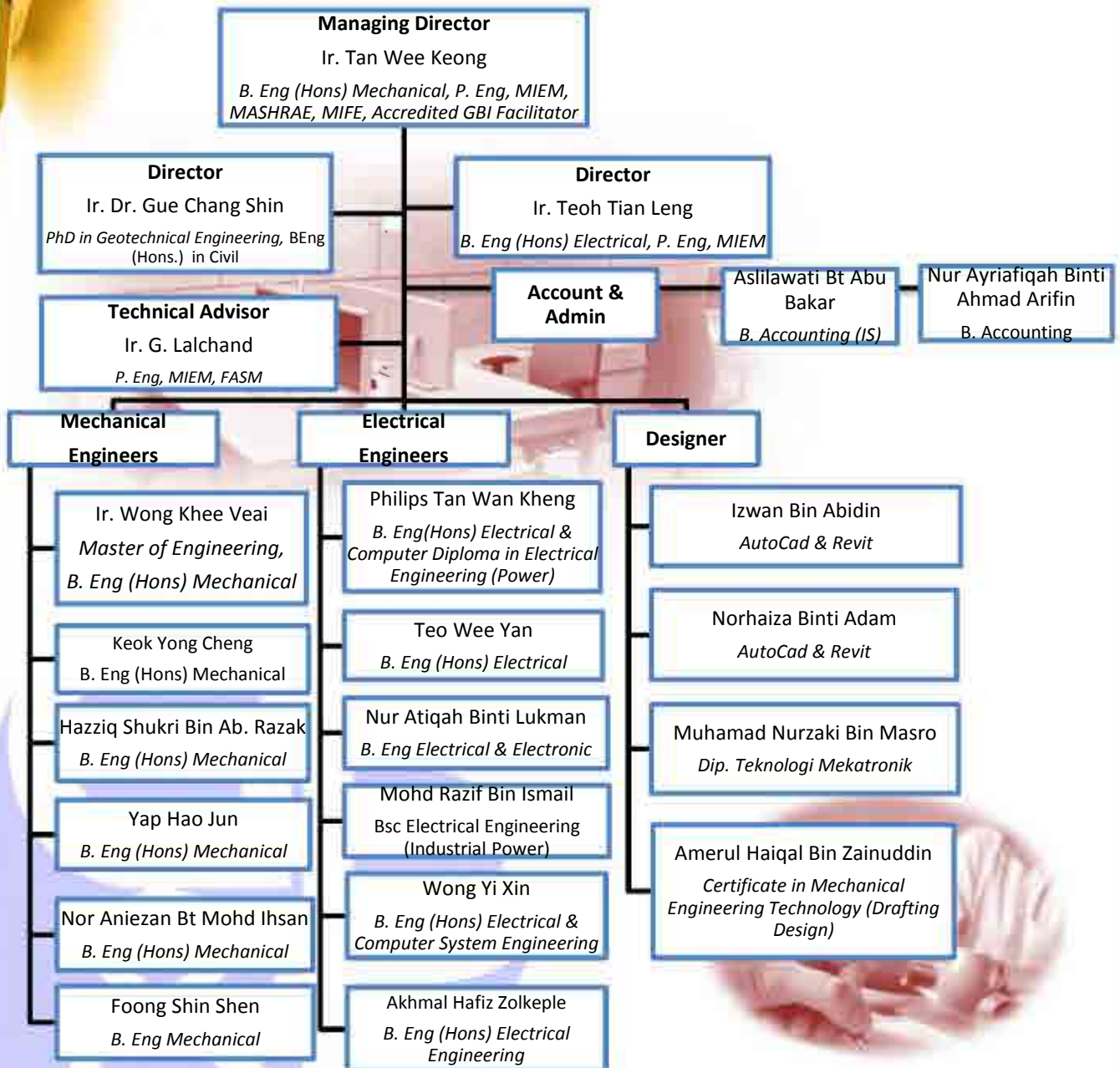


We utilize AutoCAD REVIT MEP 2010 for Building Information Modelling and 3D Design for collision detection and 3D Design Review.



# Technical Team

*"With high caliber team of mechanical and electrical engineers , all technical and administrative maintain their high level of expertise as a result of a commitment to continuous professional development and its open-plan offices are carefully designed so that best practice can be freely shared between consultants."*





# Engineering Services

*With every client, G&P M&E begins with an initial client consultation and facility-prequalification to establish client objectives and determine financial criteria for a project. We provide engineering and design as an owner's agent, or total turn-key services for design build project installation. In all cases G&P M&E offers clients a wide range of services to address their specific needs.*

Mechanical incorporates the following services:

- **ACMV (Air Conditioning and Mechanical Ventilation)**
  - Air conditioning
  - Smoke exhaust and ventilation
- **Plumbing System**
  - Domestic water supply and distribution
  - Waste / sewage water disposal and treatment
  - Hot water supply and distribution
  - Steam generation and distribution
  - Compressed Air and Gas distribution system
- **Fire Protection System**
  - Hydrant & sprinkler, hose reel & wet riser
  - Portable fire extinguisher
  - Fire detection / alarm system
- **Vertical Transportation**
  - Lifts and escalators
- **Waste collection system**
  - Gravity chute
  - Full vacuum

Electrical incorporates the following services:

- Power distribution throughout the building
- Standby power generation
- General lighting and receptacle plan
- Lightning protection
- Building automation system
- Telephone installation plan
- Structured data cabling
- Background music and PA system
- MATV & CCTV system
- Access control & security system



# Engineering Services

## Value Added Offering

Beyond broad spectrum engineering design and complete construction administration services, G&P M&E has some unique additional capabilities:

### **Commissioning**

At G&P M&E, we believe commissioning should be involved in every stage of the project in order to deliver an excellent operating facility. Commissioning helps guarantee quality of construction and functional of performance from programming and schematic design through the long term operation of the facility. Fundamental building system commissioning is a green building prerequisites.

### **Green Building Consulting - Green Building Index, Malaysia / Green Mark, Singapore**

We provide full service of Green Building Index facilitating and documentation with our GBI facilitators. GBI is a widely use Rating System developed by Malaysia Green Building Council that forms a national standard for developing high performance, sustainable buildings.

### **Energy Audit and Use Analysis**

We work with owners to assess the energy performance of both existing and proposed facilities. With existing buildings, we are able to monitor and evaluate present energy usage and make recommendations. For proposed designs, we use a dynamic computer model to forecast energy consumption and life cycle cost for all building types, with the ability to compare various alternates to a baseline.



# Engineering Services

## Value Added Offering

### **Computational Fluid Dynamic (CFD)**

With the state-of-the-art computing facilities, we deliver reliable solution within a short period of time for a wide range of engineering applications in the Building Services industry; Building Aerodynamics & Wind Engineering, Fire & Safety and Air Conditioning & Industrial Ventilation. Appropriate modeling approach to meet specific Client's requirement is assured, with complete CFD investigation which leads to the selection of suitable performance-based engineering design concepts & solutions, providing our client with unparalleled competitive advantage.

### **AutoCAD Revit MEP**

It provides mechanical, electrical and plumbing (MEP) engineers and drafters with the tools to design even the most complex building systems. Revit supports Building Information Modelling (BIM), help drive accurate draft, design, analysis, and documentation of more efficient building systems from concept through to construction. Use information-rich models to support building systems design throughout the building lifecycle. It decrease coordination issues, save time spent on repetitive tasks, and deliver projects faster with higher quality documentation.



# Engineering Services

## CFD Benefits

### INSIGHT

- Helps to virtually crawl inside a system or device and see its performance

### FORESIGHT

- Predicts and tests the performance of a system or device under many configuration until arrive at an optimal result prior to physical works or prototyping

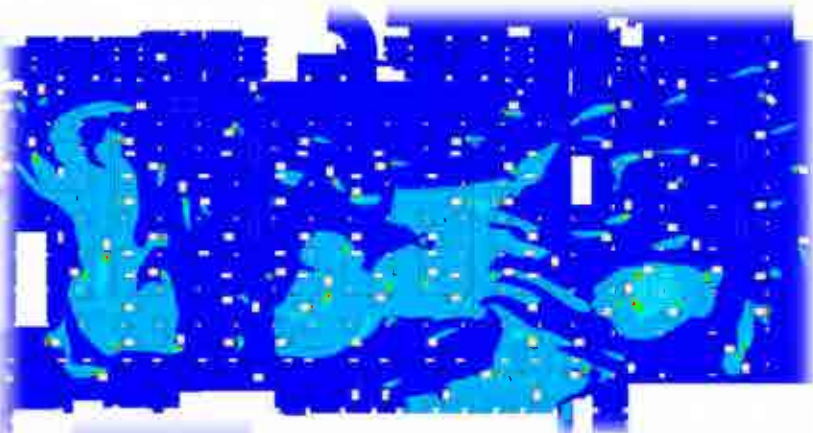
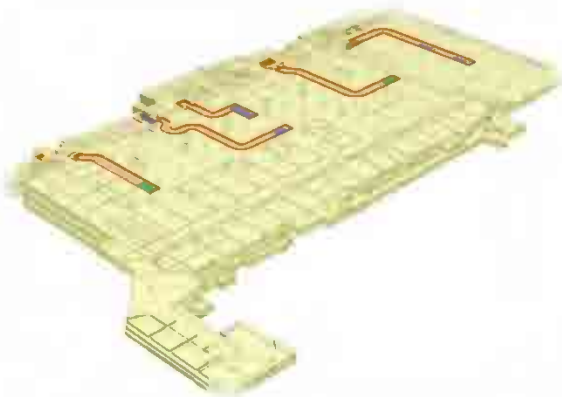
### EFFICIENCY

- Help to design a better and economical system or device and hence leads to design enhancement without cost, expenses or physical disruption

# Engineering Services

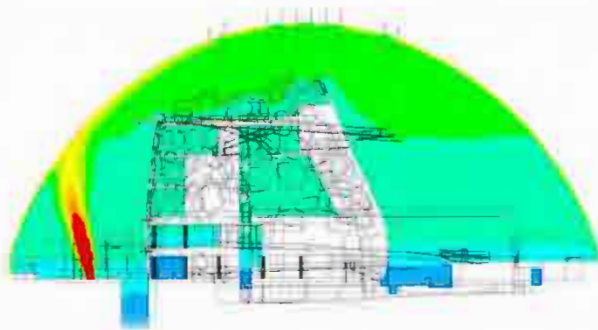
## CFD Application

*Car Park Ventilation*



# Engineering Services

## CFD Application



- Computational model for conservatory
  - Temperature contours about fire source at time = 12 minutes
  - RED = High Concentration
  - BLUE = Low Concentration

*Fire Safety Assessment*

# Engineering Services

## CFD Application

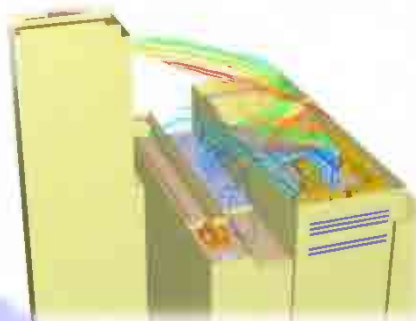
*Building Aerodynamic &  
Wind Engineering*



Surface pressure contours on building & terrain due to wind loading

RED = High pressure

BLUE = Low pressure



Particle trajectory from exhaust plume fans indicating entrainment of contaminant into building roof area and air intakes due to wind gust

# Engineering Services

## CFD Application

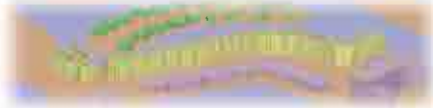
*Building Aerodynamic &  
Wind Engineering*



Pressure contours on residential development due to south wind

RED = High pressure

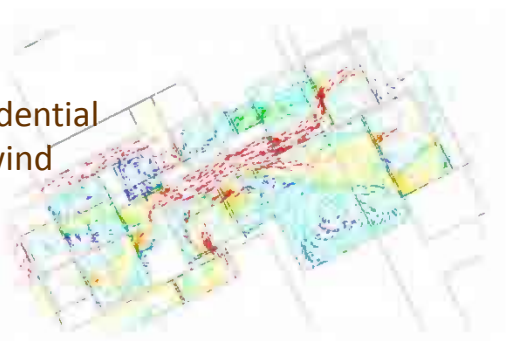
BLUE = Low pressure



Air velocity vectors in residential apartment due to south wind

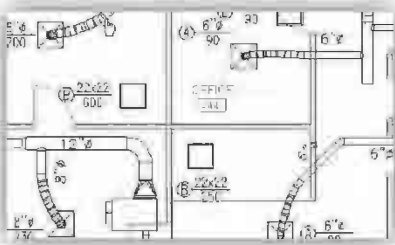
RED = High speed

BLUE = Low speed



# Engineering Services

## AutoCAD MEP Application



More accurate  
designs

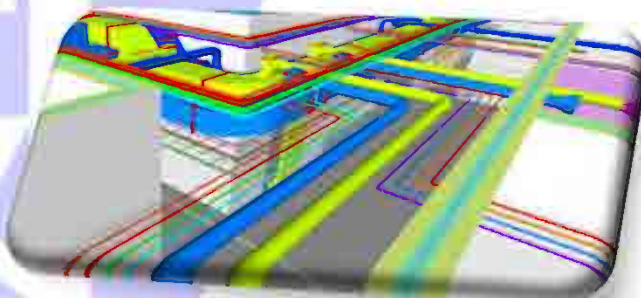


Fabrication  
for MEP  
contractors

Coordinate  
design  
information

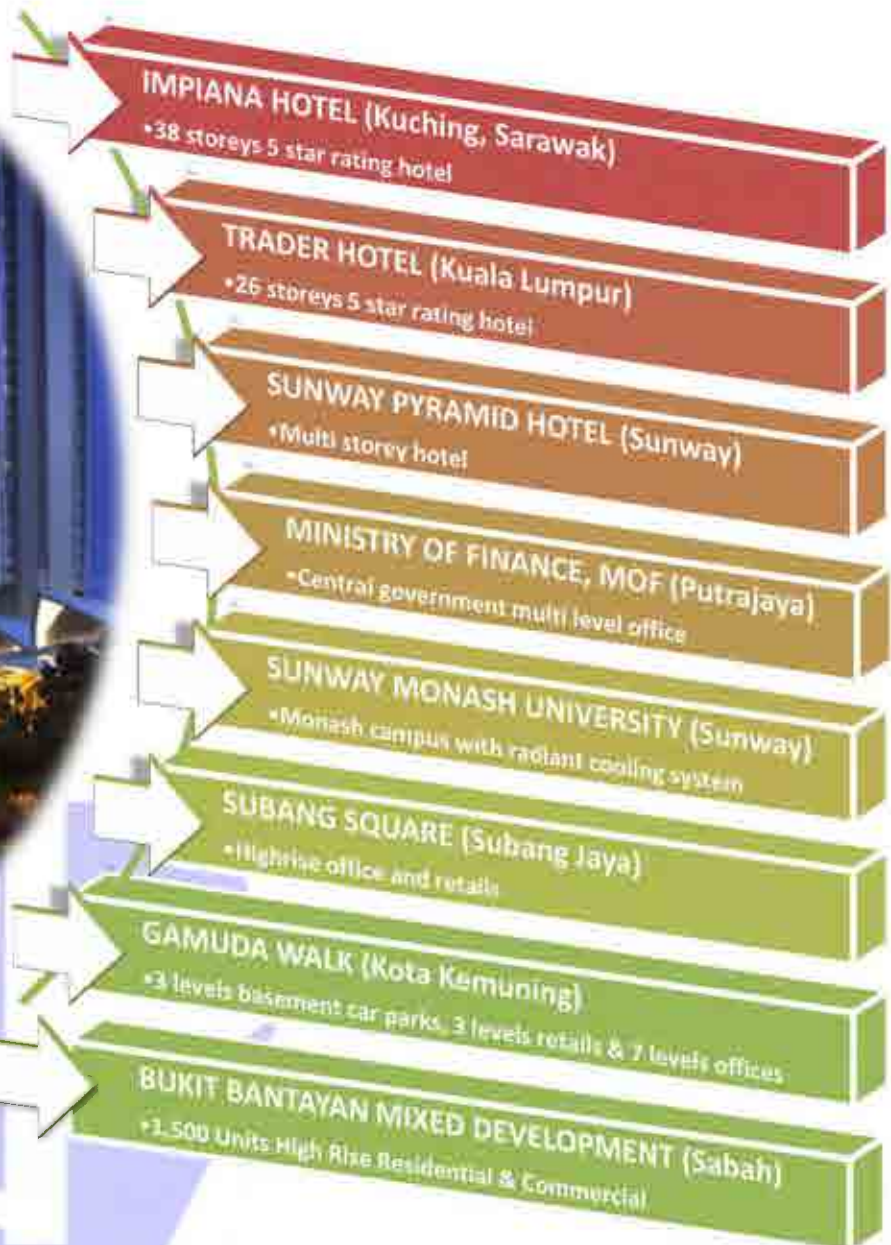
Schematic  
design

Effective  
collaboration



# Projects

## High-rise Commercial Building



# Projects

## High-rise Commercial Building



**PLO T P, CYBERJAYA CITY CENTRE, SEPANG, SELANGOR**  
• 2 Storey Centre, 2 Storey Basement, 24 Storey Hotel

**PLO T O, CYBERJAYA CITY CENTRE, SEPANG, SELANGOR**  
• Mixed Commercial Development, IT Mall, SOHO, Serviced Apartment

# Projects

## Impiana Hotel (Kuching, Sarawak)

Commercial



# Projects

## Traders Hotel *(Kuala Lumpur)*



Commercial

# Projects

## MB Square (*Bangsar*)



Commercial

# Projects

## **Gamuda Walk (Kota Kemuning)**



**Commercial**

**Mixed Development – Office Suites & Podium Shopping Mall**

# Projects

## PLOT P, CYBERJAYA



**360 Rooms Hotel**



**Convention Centre**

*Commercial*

# Projects

## PLOT P, CYBERJAYA



Commercial

# Projects

## PLOT O, CYBERJAYA



*Commercial*



# Projects

## The Signature (*Sri Hartamas*)



Commercial

# Projects

## Subang Square



**Commercial**

**Mixed Development – Office Suites & Retail Mall**

# Projects

## 2G5 & 2G6 *(Putrajaya)*



Commercial

# Projects

**2G1**

*(Putrajaya)*



Putrajaya

**Commercial**

# Projects

## Plaza Pantai (Kuala Lumpur)



Commercial

**Mixed Development – Offices, Retails  
& LRT Station**



# Projects

## Low-rise Commercial Building

1

TESCO (Puncak Alam) Superstore

2

TESCO REFIT PROJECT for Desa Tebrau, Johor Bahru, Seberang Jaya, Pulau Pinang & Bukit Tinggi, Klang Selangor

3

FFM FACTORY (Kajang) food processing factory

4

VOLKS WAGEN SHOW ROOM, Jalan Kapar, Klang

5

BRB FACTORY (PKFZ, Klang)



# Projects

## Low-rise Commercial Building

6

PUTERI HARBOUR CONVENTION CENTER (Nusajaya, Johor Bahru)

Multi-facilities center for exhibition hall, meeting rooms, function hall, banquet hall, auditorium, plenary hall & kitchen

7

KUALA LUMPUR CONVENTION CENTER (Kuala Lumpur)

Multi-facilities centre for exhibition hall, meeting rooms, function hall, banquet hall, auditorium, plenary hall & kitchen

8

KUALA LUMPUR GOLF & COUNTRY CLUB (Kuala Lumpur)

Upgrading of club house facilities for buggy shelter, function room, banquet hall, karaoke, show room, badminton hall & tennis court

9

CUSTOM, IMMIGRATION & QUARANTINE, CIQ (Melaka)

State government CIQ

10

EATON International School, (Kajang)

International School



# Projects

## Low-rise Commercial Building

11

CP1 JADE HILL, (Kajang)  
2 & 3 Storey Shop Offices of Mixed Development

12

KYS Internation School, (Kuala Lumpur)  
International School

13

ESTUARI 1C (Johor Bahru) Neighbourhood Centre

14

PLOT C (Shah Alam, Selangor) Sales Gallery

15

M3 (Johor) Mixed Development

# PROJECTS

## Eaton International School *(Jade Hill, Kajang)*



Commercial

# Projects

## Puteri Harbour Convention Center (Johor)



Commercial

Mixed Development – Residential,  
Retails, Hotels & Convention Center

# Projects

## Estuari 1C



Commercial

# Projects

## BRB Warehouse and Plant Tower, PKFZ *(Klang)*



Commercial

# Projects

## VOLKSWAGEN Showroom



Commercial

# Projects

## CIQ Malacca



*Commercial*

# Projects

## Kuala Lumpur Golf & Country Club



Commercial

# Projects

## KL Convention Center



*Commercial*

# Projects

## PORSCHE Showroom (Kuala Lumpur)



Commercial

# Projects

## Tesco Superstore (*Puncak Alam*)



Commercial

# Projects

## M3, (Mukim Pulau, Johor)



Commercial

# Projects

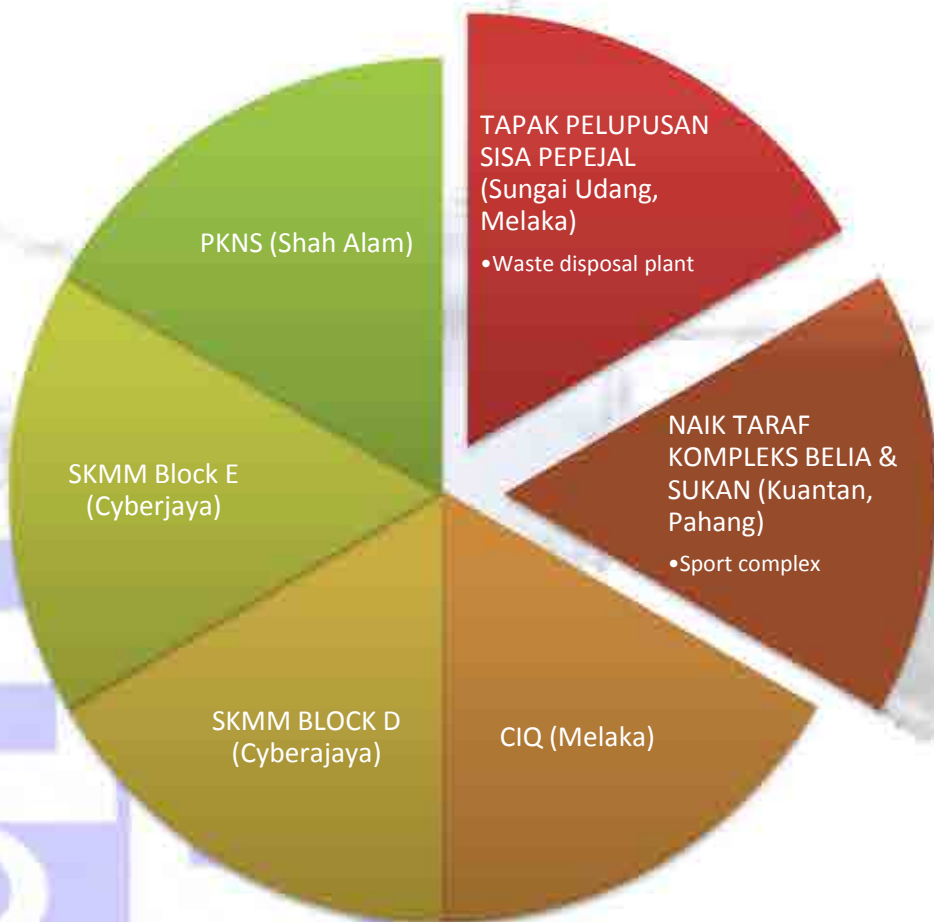
## KYS International School (KL)



*Commercial*

# Projects

## Government Project



*Part of the project reference list are extracted from both company and company's principal experiences*

# TAPAK PERLUPUSAN SISA PEPEJAL(Sungai Udang, Melaka)



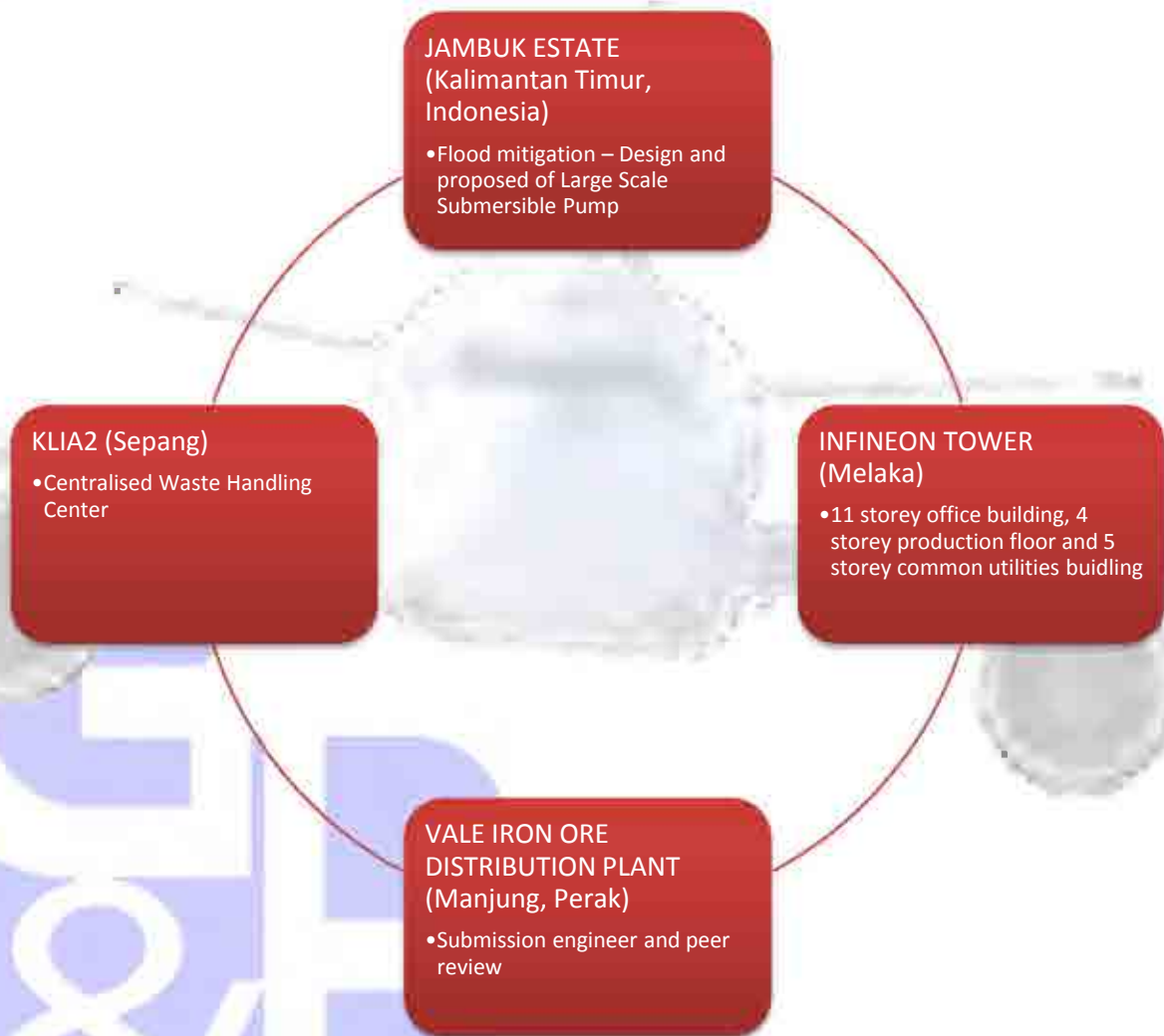
# NAIK TARAF KOMPLEKS BELIA & SUKAN (Kuantan, Pahang)

*Government Project*



# Projects

## Special Commercial Building



*Part of the project reference list are extracted from both company and company's principal experiences*

# VALE IRON ORE DISTRIBUTION PLANT (Manjung, Perak)

*Special Commercial  
Building*



# INFINEON TOWER (Melaka)



**Special Commercial  
Building**

**Up to 50,000m<sup>2</sup> cleanroom area of  
*Class 10K and 100K***

# Projects

## High Rise

1,500 Units High  
Rise Residential  
& Commercial

BUKIT  
BANTAYAN  
(Sabah)

DUTA  
SURIA  
(Ampang)

2 Blocks of 18 storey (252  
Units) Luxury condominium

2 Blocks of 39 storey  
(654 Units) Luxury  
Service Apartment

RIO CITY  
(Puchong)

ION DE  
ELEMEN  
(Genting  
Highland)

7 Blocks (1001 Units)  
Luxury Apartment

741 Units

RSKU,  
(Kajang)

RSKU,  
(Subang)

1050 Units

PR1MA,  
Kondominium,  
RSKU

PR1MA  
(Hulu  
Langat)

PR1MA  
T.O.D  
(Selangor)

PR1MA,  
Pangsapuri,  
RSKU



*Part of the project reference list are extracted from both company and company's principal experiences*

# Projects

## Duta Suria (Ampang)



Residential

# Projects

## IOI Rio City (Puchong)



*Residential*

**Mixed Development – Residential,  
Retails & Shop Office**

# Projects

## ION DE ELEMEN *(Genting Highland)*



Residential



# Residential



# Projects

## RSKU, KAJANG



*Residential*

# Projects

## RSKU, SUBANG



*Residential*

# Projects

## Low Rise

MELA SEMI-D (Melawati, Kuala Lumpur)

- 36 units semi-detached house

BATAI BARAT SUPER BUNGALOW (Bukit Damansara, Kuala Lumpur)

- 16 units Luxury Super Bungalow

TANJUNG SEPAT RESORT

- 36 units of Villa House

L1 (Sunway Iskandar, Johor Bahru)

- 361 unit rumah teres, rumah kluster dan rumah bandar

BERANANG TOWNHOUSE (Bandar Tasik Kesuma, Selangor)

- Rumah Bandar Selangorku  
760 Unit

PKNS (Shah Alam, Selangor)

- 48 unit rumah teres 2 tingkat

ZOOVIEW (Gombak, Selangor)

- 16 unit rumah Semi-D

DHOMES

Residential

*Part of the project reference list are extracted from both company and company's principal experiences*

# Projects

## Batai Barat (Bukit Damansara)



*Residential*

# Projects

## Beranang Townhouse



*Residential*

# Projects

## Tanjung Sepat Resort



*Residential*

# Projects

JADE HILLS  
(Kajang)

- Overall infrastructure design of residential project

BANGSAR  
MAHKOTA  
NILAI (Negeri  
Sembilan)

- Overall infrastructure design of proposed Residential Mix Development

Daerah Kuala  
Langat (Elite  
Highway)

- Master infrastructure design of proposed Commercial Mix Development

Mukim Tanjong  
Dua Belas  
(Kuala Langat,  
Selangor)

- Master infrastructure design of proposed Mix Development project (1500Acres)

KK257 Acres,  
Persiaran  
Rimbayu (Kuala  
Langat)

- Master infrastructure design of proposed Mix Development

Zone F &  
Pendas

- Master infrastructure design of proposed Mix Development

Infrastructure



*Part of the project reference list are extracted from both company and company's principal experiences*

# Projects

## Jade Hills (366 Acres) *(Kajang)*



Infrastructure

# Infrastructure



# Projects

## Ukay Heights *(Ampang, Selangor)*



Infrastructure

# Projects

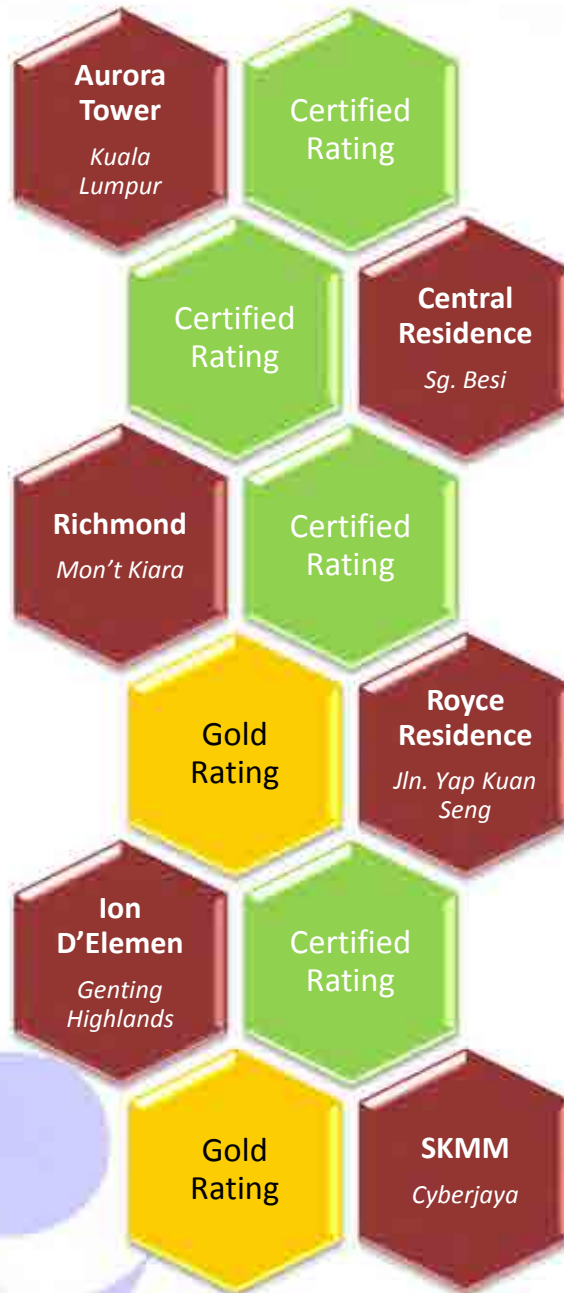
## Hillpark Homes (160 Acres) *(Kajang, Selangor)*



Infrastructure

# Projects

Green Building Index



green building index

# Projects

## ION D'ELEMEN *(Genting Highlands)*

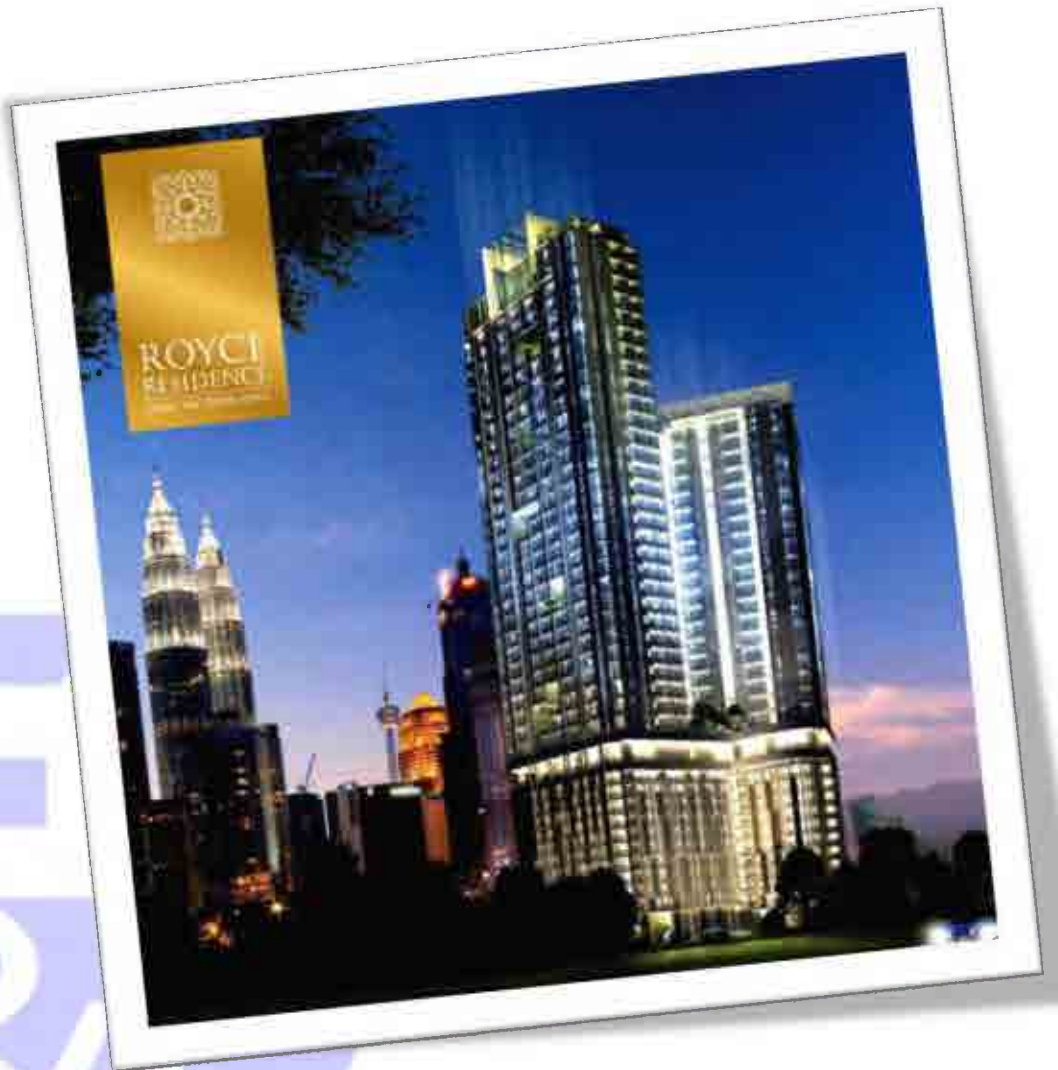
Green Building Index



# Projects

## Royce Residences *(Kuala Lumpur)*

*Green Building Index*



# Projects

## Central Residence (Sungai Besi)

Green Building Index

GREEN BUILDING INDEX CERTIFICATE NO.  
GBI-RNC-0091(P)

DATE OF ISSUANCE:  
13 JANUARY 2014

**SERVICED APARTMENT, JLN SG BESI**

LOT 2000, BATHY, JALAN BESIH, KUALA LUMPUR, MALAYSIA

HAS BEEN AWARDED



**CERTIFIED**

PROVISIONAL GBI CERTIFICATION

OWNER/APPLICANT:  
YUK TUNG LAND SDN BHD

AR. BOON CHEE WEE  
CHAIRMAN  
GREEN BUILDING INDEX (GBI) ACCREDITATION PANEL

GREEN BUILDING INDEX SDN BHD (153544-V)  
A-10-13A, Menara UCA, Bangsar 5, Jalan Bangsar, Utama 1, 59000 Kuala Lumpur, Malaysia  
Tel: 603 7263 7544 Fax: 603 2284 2544  
[www.greenbuildingindex.org](http://www.greenbuildingindex.org) | [info@greenbuildingindex.org](mailto:info@greenbuildingindex.org)



# Projects

## RICHMOND (*Mon't Kiara*)

Green Building Index

GREEN BUILDING INDEX CERTIFICATE NO.  
GBI-RNC-0068(P)

DATE OF ISSUANCE  
23 AUGUST 2013

**RICHMOND, MONT KIARA**

LOT 22002, 22001 & 22000 MANOK RAJA ROAD, KUALA LUMPUR, MALAYSIA

HAS BEEN AWARDED



**CERTIFIED**

PROVISIONAL GBI CERTIFICATION

OWNER / APPLICANT  
SKILLCET CAPITAL SDN BHD

AR BOON CHEE WEE  
CHAIRMAN  
GREEN BUILDING INDEX (GBI) ACCREDITATION PANEL

GREEN BUILDING INDEX (GBI) AND SKILLCET CAPITAL SDN BHD  
A-10-10A, Menara M&A, 10th Floor, 10, Persiaran Pintas, 50450 Kuala Lumpur, Malaysia  
Tel: 603-2011-2011 Fax: 603-2011-2011  
www.greenbuildingindex.org



# Projects

## MCMC (Cyberjaya)

Green Building Index

GREEN BUILDING INDEX CERTIFICATE NO  
GBI-NRNC-0097(P)

DATE OF ISSUANCE  
23 DECEMBER 2013

**OFFICE TOWER BLOCK D, SHAFTSBURY SQUARE,  
CYBERJAYA, SELANGOR DARUL EHSAN**

BLOCK D, SHAFTSBURY SQUARE, JALAN INTAI UT, CYBER 6, 63000 CYBERJAYA,  
SELANGOR DARUL EHSAN

HAS BEEN AWARDED



**GOLD**

PROVISIONAL GBI CERTIFICATION

OWNERS/CLIENTS:  
SURUHAN JAYA KOMUNIKASI DAN N

AR. BOON CHEE WEE  
CHAIRMAN  
GREEN BUILDING INDEX GBI ACREDITATION PANEL

GREEN BUILDING INDEX (GBI) is a leading  
authority in Malaysia and Singapore in Green Building Index (GBI) certification  
www.greenbuildingindex.org | info@greenbuildingindex.org





# Green Building Index



# Projects

## PRIME MINISTER OFFICE *(Putrajaya)*

*Energy Audit/  
Commissioning*



# Projects

## MINISTRY OF HEALTH *(Putrajaya)*

*Energy Audit/  
Commissioning*



# CLIENTS



**KOLEJ YAYASAN SAAD (KYS)  
ASSETS SDN BHD**



**IOI PROPERTIES**

***SUNWAY***®

**HEXACHAMP**

**GAMUDA**

# REGISTRATION

(Borang F)

**AKTA PENDAFTARAN JURUTERA 1967  
PERATURAN-PERATURAN PENDAFTARAN JURUTERA 1990  
(PERATURAN 35)**



No. Perakuan : 2012-3600-00000-BC-1245

**LEMBAGA JURUTERA MALAYSIA**

**PERAKUAN PENDAFTARAN SEBAGAI AMALAN JURUTERA PERUNDING**

INI ADALAH UNTUK MEMPERAKUI BAHAWA

Nama : **Perbadanan Korporat  
G&P M&E SDN. BHD.**

Alamat : **NO. 23-2 JALAN TASIK SELATAN 3  
BANDAR TASIK SELATAN  
57000 KUALA LUMPUR  
W. PERSEKUTUAN (K.L)  
MALAYSIA**

Cawangan Kejuruteraan: **\*\* MECHANICAL, ELECTRICAL \*\***

yang telah mematuhi kehendak-kehendak Akta Pendaftaran Jurutera 1967 dan telah membayar fee pendaftaran didaftarkan sebagai suatu AMALAN JURUTERA PERUNDING dalam cawangan kejuruteraan yang dinyatakan di atas tertakluk kepada syarat-syarat yang dinyatakan di bawah.

Syarat-syarat:

Perakuan pendaftaran ini akan habis tempoh pada **31 Disember 2020**



(Ir. KAMALUDDIN BIN HAJI ABDUL RASHID)  
Yang Dipertua

(Ir. HIZAMUL-DIN BIN AB. RAHMAN)  
Pendaftar

Tarikh Dikeluarkan : 17 Januari 2020

# REGISTRATION



## KEMENTERIAN KEWANGAN MALAYSIA

### SIJIL AKUAN PENDAFTARAN FIRMA PERUNDING

NO. SIJIL : J60410604362265610  
NO. RUJUKAN PENDAFTARAN : 465-02039076  
TEMPOH SAH LAKU : 21/05/2019 - 20/05/2022

Bahawa dengan ini diperakui syarikat :

G&P M&E SDN BHD ( 938593A )  
23-2 JALAN TASIK SELATAN 3  
BANDAR TASIK SELATAN,  
W.P. KUALA LUMPUR  
57000 KUALA LUMPUR  
WILAYAH PERSEKUTUAN KUALA LUMPUR, MALAYSIA

Telah berdaftar dengan Kementerian Kewangan Malaysia dalam bidang bekalan/perkhidmatan di bawah sektor, bidang dan sub-bidang seperti di Lampiran A. Kelulusan ini adalah tertakluk kepada syarat-syarat seperti yang dinyatakan di Lampiran B. Individu yang diberi kuasa oleh syarikat bagi urusan perolehan Kerajaan adalah seperti berikut :

TAN WEE KEONG	710714105071	PENGARAH URUSAN
TEOH TIAN LENG	720809015481	PENGARAH
ASLILAWATI BINTI ABU BAKAR	830109075384	SENIOR ACCOUNT & ADMIN

t.t

DATO' ZAMZURI BIN ABDUL AZIZ

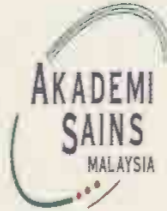
Bahagian Perolehan Kerajaan  
b.p. Ketua Setiausaha Perbendaharaan  
Kementerian Kewangan Malaysia

Tarikh Berdaftar Dengan Kementerian Kewangan Malaysia : 21/05/2019

(Sijil ini adalah cetakan komputer dan tidak memerlukan tandatangan)

# PROFESSIONAL MEMBERSHIP

*Akademi Sains Malaysia*



Dengan ini disahkan bahawa

**Ir Lalchand Gulabrai**

telah dipilih sebagai

*Felo*

pada

**26 April 2014**

di atas pencapaian dan sumbangan yang unggul kepada  
Sains, Kejuruteraan dan Teknologi bagi pembangunan negara

Presiden  
Akademi Sains Malaysia

Setiausaha Agung  
Akademi Sains Malaysia



# CERTIFICATE OF SIME DARBY PROPERTY



**Property**

Certificate of

## Registration

to

**G&P M&E SDN BHD (938593A)**

**SD03399**

for

**being a Sime Darby Property  
Approved Vendor**

from **23 Oct 2019**

to **23 Oct 2021**

**Pre-Qualification Approval Committee**

Sime Darby Property Berhad

(This certificate is computer generated and no signature is required)

**SIME DARBY  
PROPERTY**